

ALL INFORMATION CONTAINED HEREIN IS UNCLASSIFIED



A1	COVER SHEET
A2	EXISTING / DEMO PLAN
A3	FLOOR PLAN - 1 ST FLOOR
A4	FLOOR PLAN - 2 ND FLOOR
A5	ROOF PLAN
S1	FOUNDATION PLAN
S2	FRAMING PLAN
S3	WALL SECTIONS AND DETAILS
P1	PLUMBING PLAN
E1	ELECTRICAL PLAN
M1	MECHANICAL PLAN 1 ST FLOOR
M2	MECHANICAL PLAN 2 ND FLOOR

[REDACTED]

USE GROUP
CONSTRUCTION TYPE
FIRST FLOOR LIVING AREA (EXISTING / PROPOSED)
SECOND FLOOR LIVING AREA (EXISTING / PROPOSED)
TOTAL LIVING AREA
EXISTING FRONT PORCH
EXISTING REAR PORCH
EXISTING SIDE PORCH (SUNROOM)

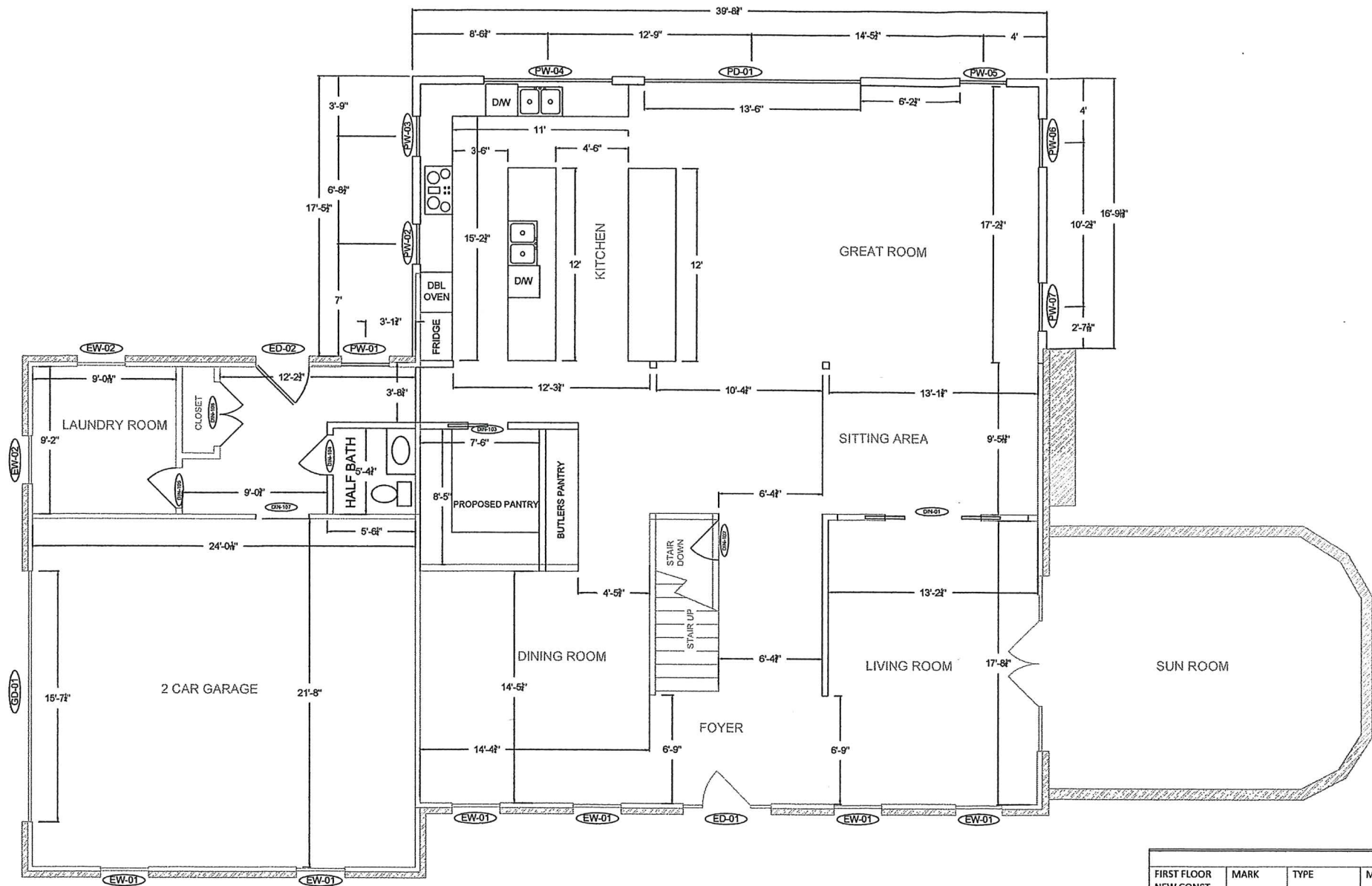
R5
5B
1,487 SF / 1,956 SF
1,112 SF / 2,470 SF
2,599 SF / 4,426 SF
235 SF
86 SF
296 SF
11,206 CF

A1

900 MCELWEE ROAD
BLOCK 8300, LOT 21
COVER SHEET

SITUATED IN
MOORESTOWN, BURLINGTON COUNTY, NEW JERSEY

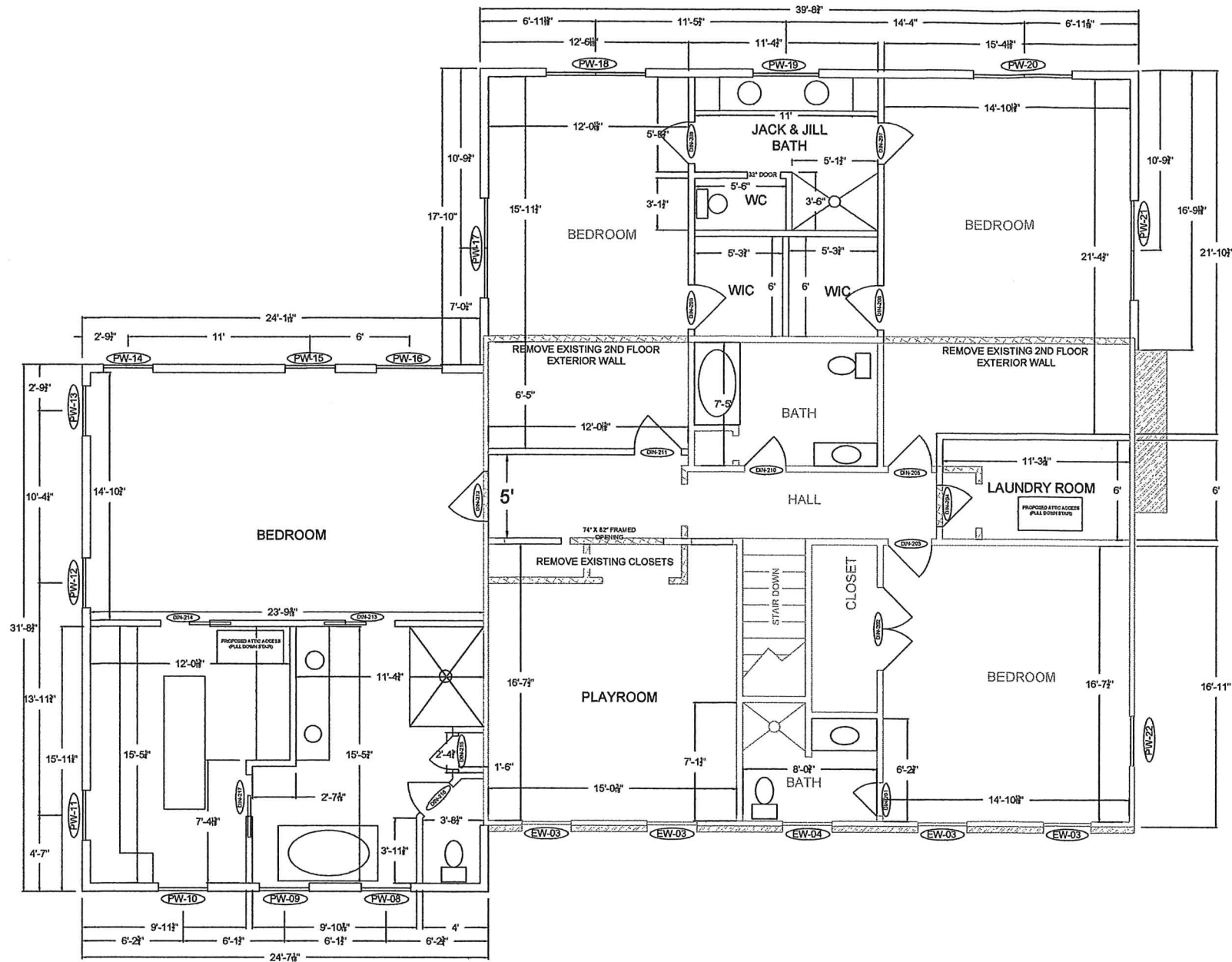
DRAWN BY:		CHECKED BY:	RELEASED BY:		
DATE:	09/24/2018	HORIZONTAL SCALE: N/A	VERTICAL SCALE: N/A		
PROJECT No.:					
				DATE:	
				REVISIONS:	
				DRAWN BY:	CHECK



1ST FLOOR WINDOW AND DOOR SCHEDULE							
FIRST FLOOR NEW CONST.	MARK	TYPE	MANUF.	SIZE	HEADER	KING / JACK STUDS (K/J)	NOTES
	PW-01	PICTURE	ANDERSEN	244FX3060	2-2X12	1/2	GRIDS / TEMPERED
	PW-02	DH	ANDERSEN	244DH2430	2-2X12	1/2	6/1 GRIDS
	PW-03	DH	ANDERSEN	244DH2430	2-2X12	1/2	6/1 GRIDS
	PW-04	FOLDING	ANDERSEN	96"X48"	3-2X12	3/2	
	PD-01	FOLDING	ANDERSEN	162" X 80"	5 1/8" X 12 GLULAM	6/3	
	PW-05	DH	ANDERSEN	244DH3056	2-2X12	1/2	6/1 GRIDS
	PW-06	DH	ANDERSEN	244DH3056	2-2X12	1/2	6/1 GRIDS
	PW-07	DH	ANDERSEN	244DH3056	2-2X12	1/2	6/1 GRIDS
	DIN-101	POCKET		DOUBLE 3'-0" X 6'-8"	3 1/4" X 11 7/8" LVL		6 PANEL
	DIN-102	RH SWING		2'-8" X 6'-8"	2-2X4	1/1	6 PANEL
	DIN-103	POCKET		2'-6" X 6'-8"	2-2X10	1/1	6 PANEL
	DIN-104	RH SWING		2'-6" X 6'-8"	2-2X4	1/1	6 PANEL
	DIN-105	LH SWING		2'-6" X 6'-8"	2-2X4	1/1	6 PANEL
	DIN-106	DBL SWING		2'-0" X 6'-8"	2-2X4	1/1	6 PANEL
	DIN-107	RH SWING		3'-0" X 6'-8"	2-2X12	1/2	20 MIN FIRE RATED/ SELF CLOSING
	EW-01 (QTY 6)	DH	ANDERSEN	3056			
	EW-02 (QTY 2)	DH	ANDERSEN	3040			
FIRST FLOOR REPLACEMENT	ED-01	EXT. SWING		3'-0" X 6'-8"			
	ED-02	EXT. SWING		5'-6" X 6'-8"			WITH SIDELIGHTS

900 MCELWEE ROAD
BLOCK 8300, LOT 21
FLOOR PLAN
1ST FLOOR

SITUATED IN
MOORESTOWN, BURLINGTON COUNTY, NEW JERSEY

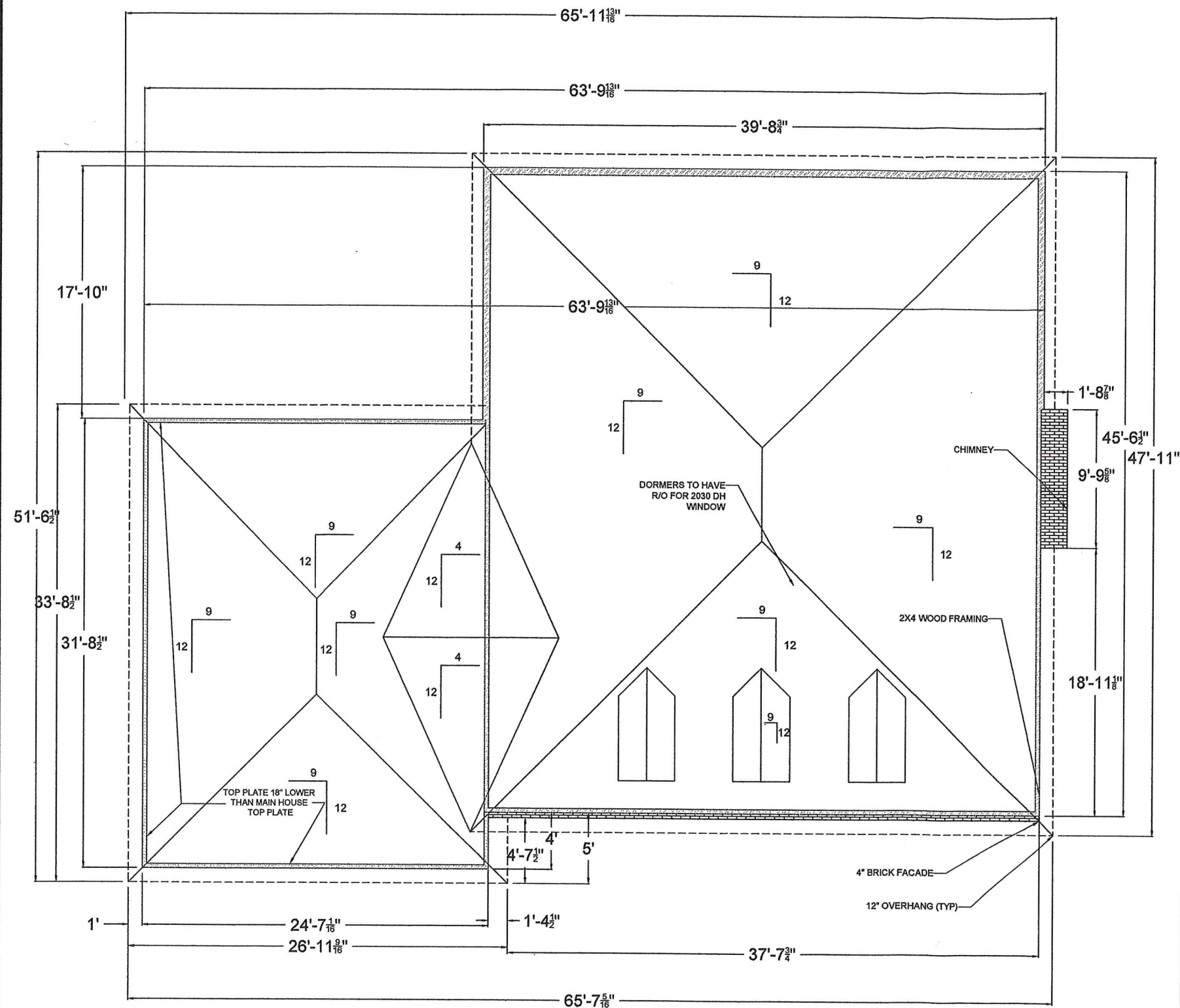


2ND FLOOR WINDOW AND DOOR SCHEDULE							
	MARK	TYPE	MANUF.	SIZE	HEADER	KING / JACK STUDS (K/J)	NOTES
SECOND FLOOR NEW CONST.	PW-08	AWNING	ANDERSEN	AW31	2-2X6	1/1	6 GRIDS / TEMPERED
	PW-09	AWNING	ANDERSEN	AW31	2-2X6	1/1	6 GRIDS / TEMPERED
	PW-10	AWNING	ANDERSEN	AW31	2-2X6	1/1	6 GRIDS
	PW-11	AWNING	ANDERSEN	AW31	2-2X6	1/1	6 GRIDS
	PW-12	DH	ANDERSEN	244DH3040	2-2X6	1/1	6/1 GRIDS
	PW-13	DH	ANDERSEN	244DH3040	2-2X6	1/1	6/1 GRIDS
	PW-14	DH	ANDERSEN	244DH3050	2-2X6	1/1	6/1 GRIDS / EGRESS
	PW-15	DH	ANDERSEN	244DH3050	2-2X6	1/1	6/1 GRIDS
	PW-16	FRENCH CASE	ANDERSEN	4659	2-2X6	2/1	6/1 GRIDS
	PW-17	DH	ANDERSEN	2 - 244DH3040	2-2X10	3/2	6/1 GRIDS
	PW-18	DH	ANDERSEN	2 - 244DH3050	2-2X10	3/2	6/1 GRIDS / EGRESS
	PW-19	PW	ANDERSEN	244FX4040	2-2X6	1/1	6 GRIDS / TEMPERED FROSTED
	PW-20	DH	ANDERSEN	2 - 244DH3050	2-2X10	3/2	6/1 GRIDS / EGRESS
	PW-21	DH	ANDERSEN	2 - 244DH3040	2-2X10	3/2	6/1 GRIDS
	PW-22	DH	ANDERSEN	244DH3050	EXISTING	EXISTING	6/1 GRIDS / EGRESS
	DIN-201	LH SWING		2'0" X 6'8"	2-2X4	1/1	6 PANEL
	DIN-202	DBL SWING		DBL 2'6" X 6'8"	2-2X4	1/1	6 PANEL
	DIN-203	RH SWING		2'8" X 6'8"	2-2X4	1/1	6 PANEL
	DIN-204	RH SWING		2'8" X 6'8"	2-2X4	1/1	6 PANEL
	DIN-205	LH SWING		2'8" X 6'8"	2-2X4	1/1	6 PANEL
SECOND FLOOR REPLACEMENT	DIN-206	LH SWING		2'6" X 6'8"	2-2X4	1/1	6 PANEL
	DIN-207	RH SWING		2'6" X 6'8"	2-2X4	1/1	6 PANEL
	DIN-208	LH SWING		2'6" X 6'8"	2-2X4	1/1	6 PANEL
	DIN-209	RH SWING		2'6" X 6'8"	2-2X4	1/1	6 PANEL
ROOF DORMERS	DIN-210	LH SWING		2'8" X 6'8"	2-2X4	1/1	6 PANEL
	DIN-211	RH SWING		2'8" X 6'8"	2-2X4	1/1	6 PANEL
	DIN-212	RH SWING		3'0" X 6'8"	2-2X6	1/1	6 PANEL
	DIN-213	POCKET		2'8" X 6'8"	2-2X4	1/1	6 PANEL
	DIN-214	POCKET		2'8" X 6'8"	2-2X4	1/1	6 PANEL
	DIN-215	RH SWING		2'0" X 6'8"	2-2X4	1/1	6 PANEL
	DIN-216	RH SWING		2'4" X 6'8"	2-2X4	1/1	6 PANEL
	DIN-217	POCKET		2'6" X 6'8"	2-2X4	1/1	6 PANEL
	EW-03 (QTY 4)	DH	ANDERSEN	3040			6/1 GRIDS
	EW-04	DH	ANDERSEN	3036			6/1 GRIDS TEMPERED
	PW-23	DH	ANDERSEN	244DH2030	2-2X4	1/1	6/1 GRIDS
	PW-24	DH	ANDERSEN	244DH2030	2-2X4	1/1	6/1 GRIDS
	PW-25	DH	ANDERSEN	244DH2030	2-2X4	1/1	6/1 GRIDS

900 MCELWEE ROAD
BLOCK 8300, LOT 21
FLOOR PLAN
2ND FLOOR

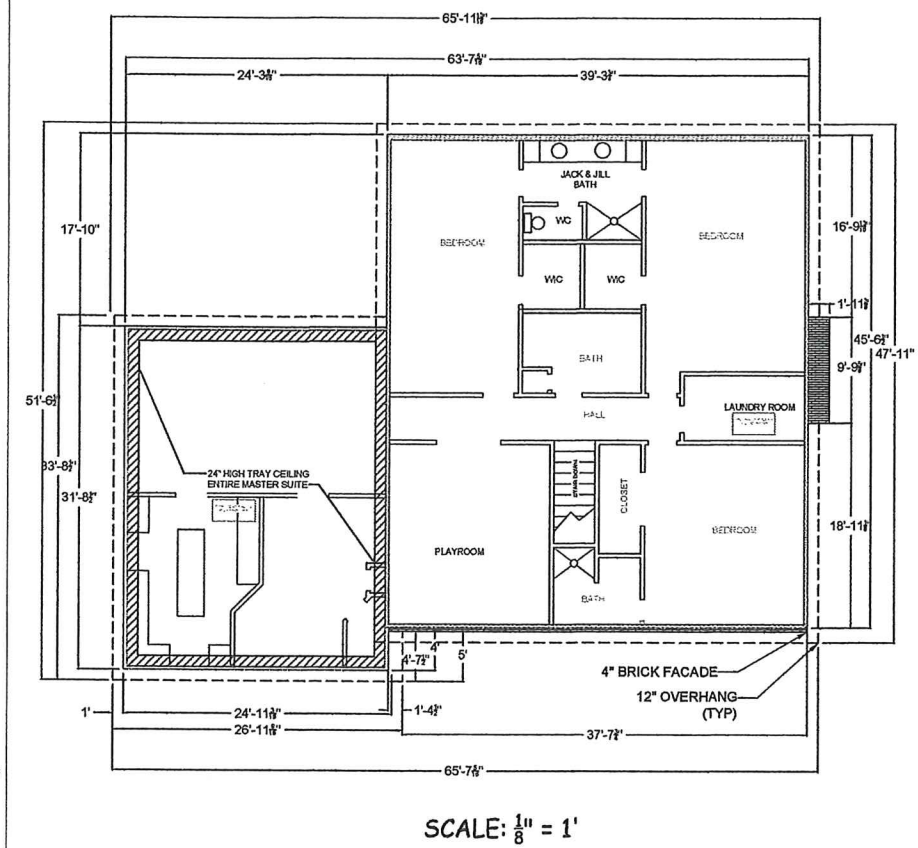
SITUATED IN
MOORESTOWN, BURLINGTON COUNTY, NEW JERSEY

A4

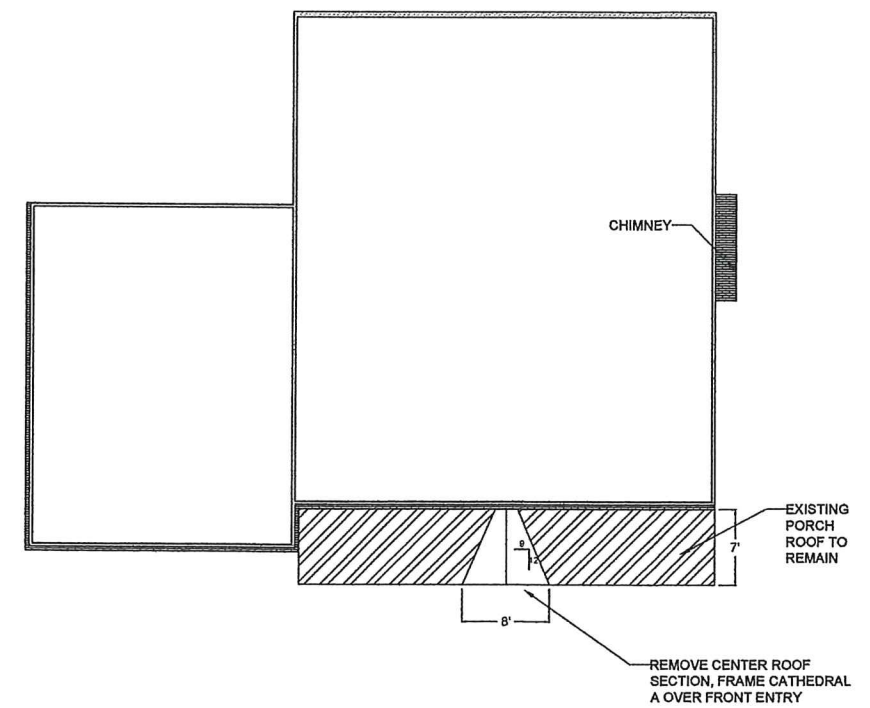


SCALE: $\frac{1}{4}" = 1'$

- NOTES:**
1. ALL BEARING WALLS ARE 2X4 FRAMING
 2. ALL DIMENSIONS ARE FRAMING TO FRAMING WITH THE EXCEPTION OF AREAS WITH BRICK FACADE
 3. DIMENSIONS TO BRICK FACADE ARE TO FACE OF BRICK
 4. SEE ROOF DETAIL SHEET FOR VAULTED CEILING LOCATIONS
 5. DORMERS TO BE FIELD FRAMED OVER ROOF SYSTEM



SCALE: $\frac{1}{8}" = 1'$



SCALE: $\frac{1}{8}" = 1'$

900 MCELWEE ROAD
BLOCK 8300, LOT 21
ROOF PLAN

SITUATED IN
MOORESTOWN, BURLINGTON COUNTY, NEW JERSEY

A5