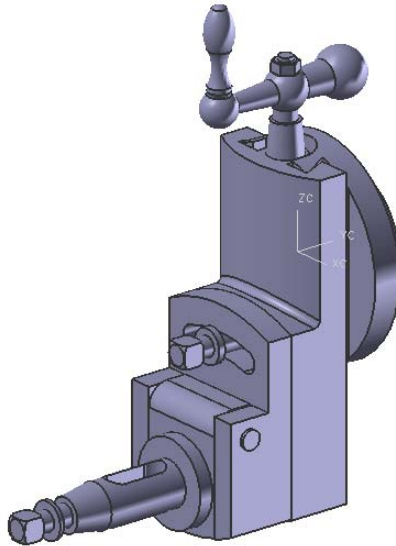
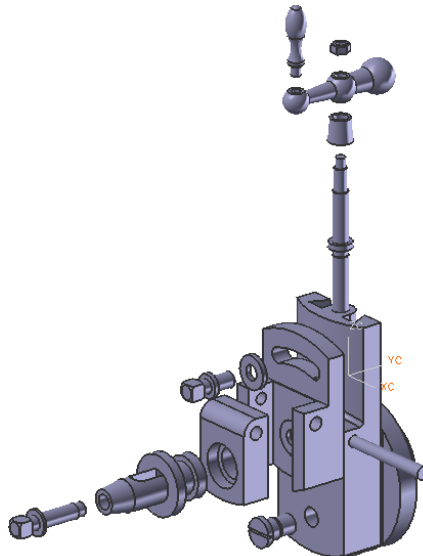


## Shaper Tool Head Assembly

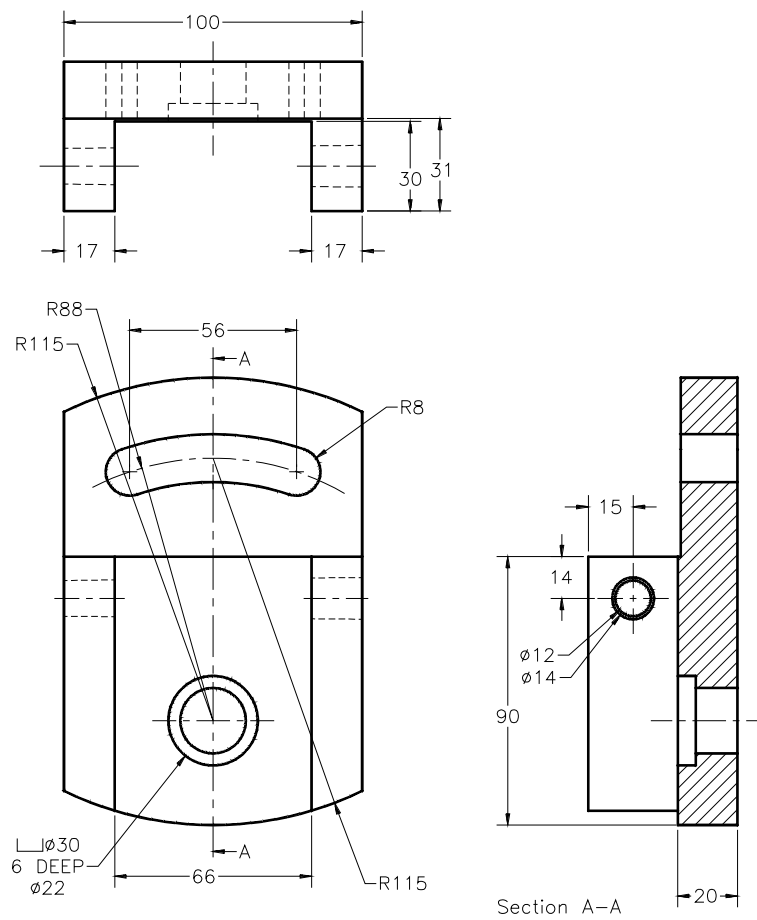
Create the Shaper Tool Head assembly, as shown in Figure 1. After creating the assembly, create its exploded view, as shown in Figure 2. The dimensions of the components are given in Figures 3 through 7.



**Figure 1** The Shaper Tool Head assembly



**Figure 2** The exploded view of the Shaper Tool Head assembly



**Figure 3** Views and dimensions of the Swivel Plate

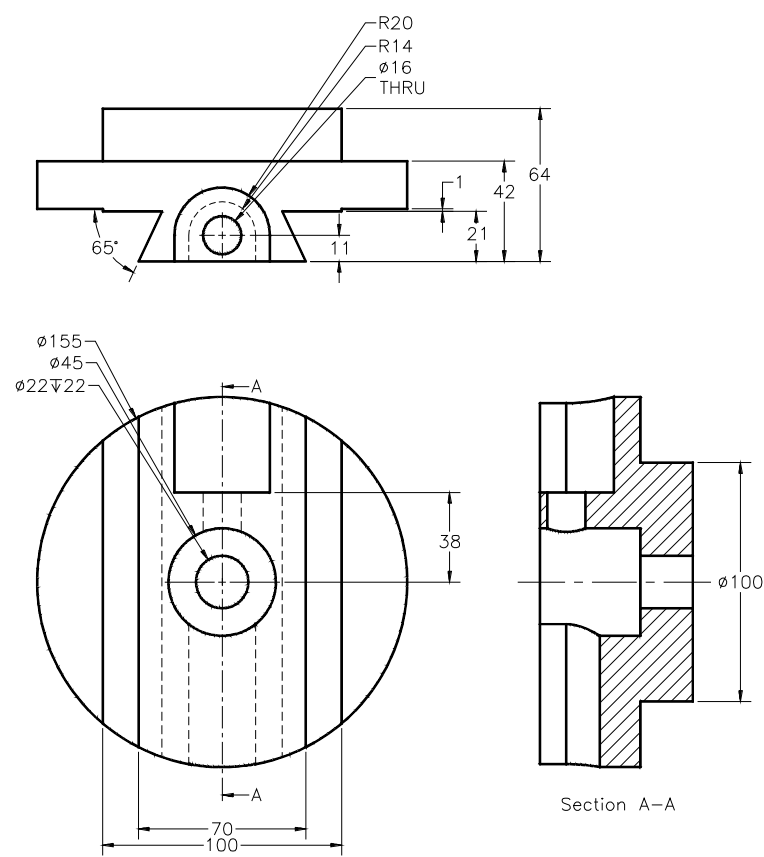
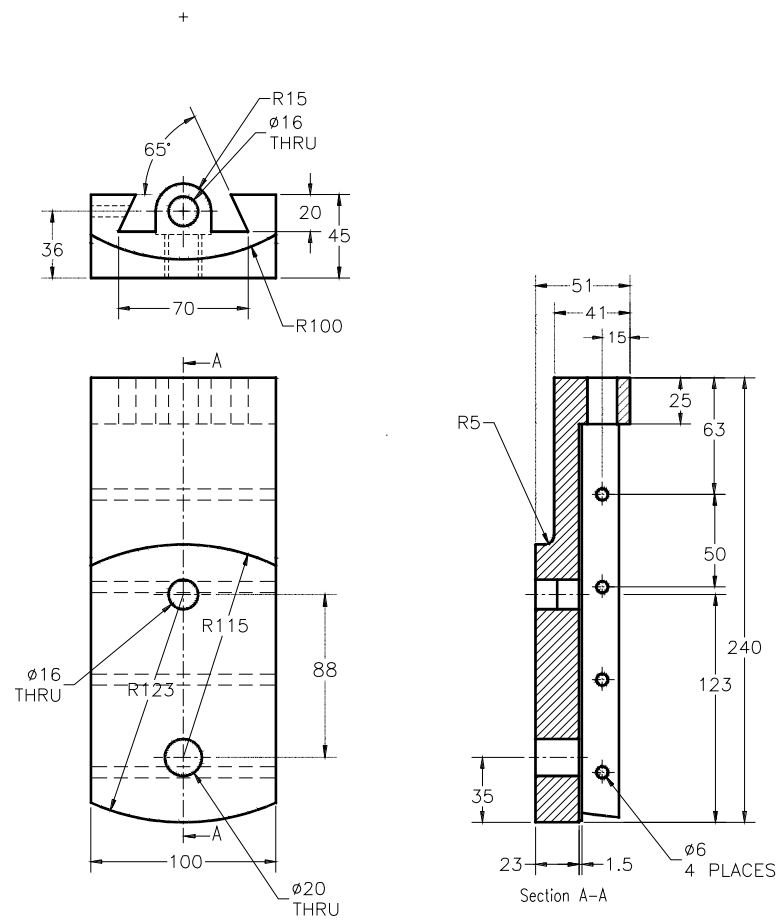


Figure 4 Views and dimensions of the Back Plate



**Figure 5** Views and dimensions of the Vertical Slide

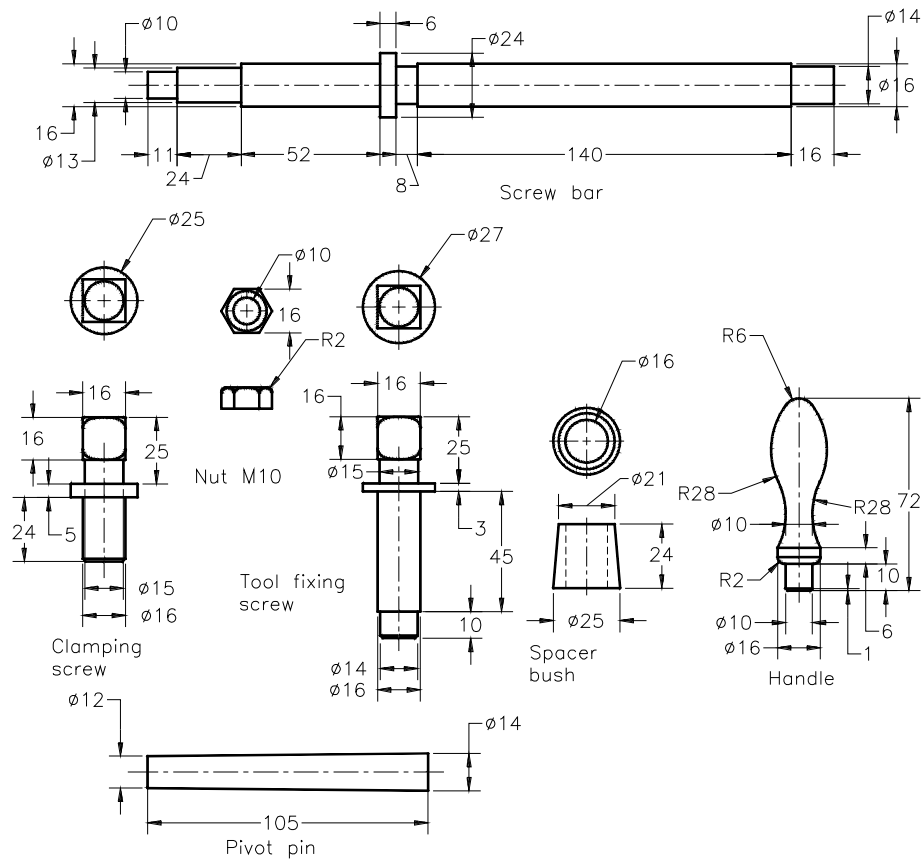
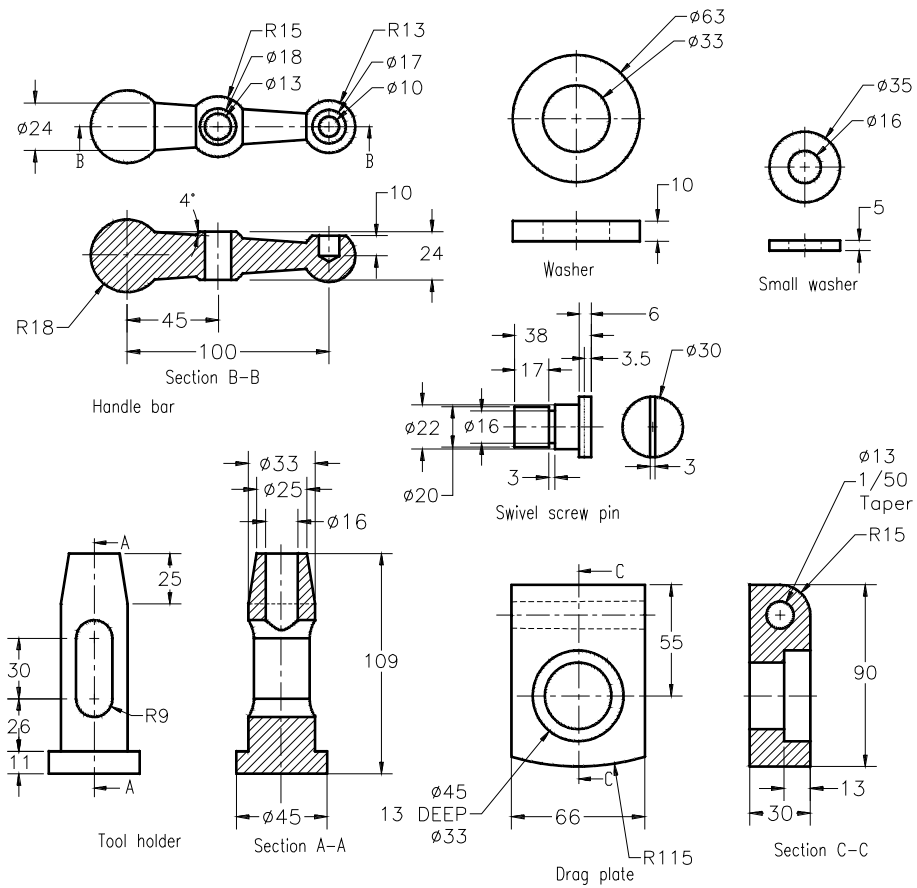


Figure 6 Views and dimensions of various components



**Figure 7** Views and dimensions of various components