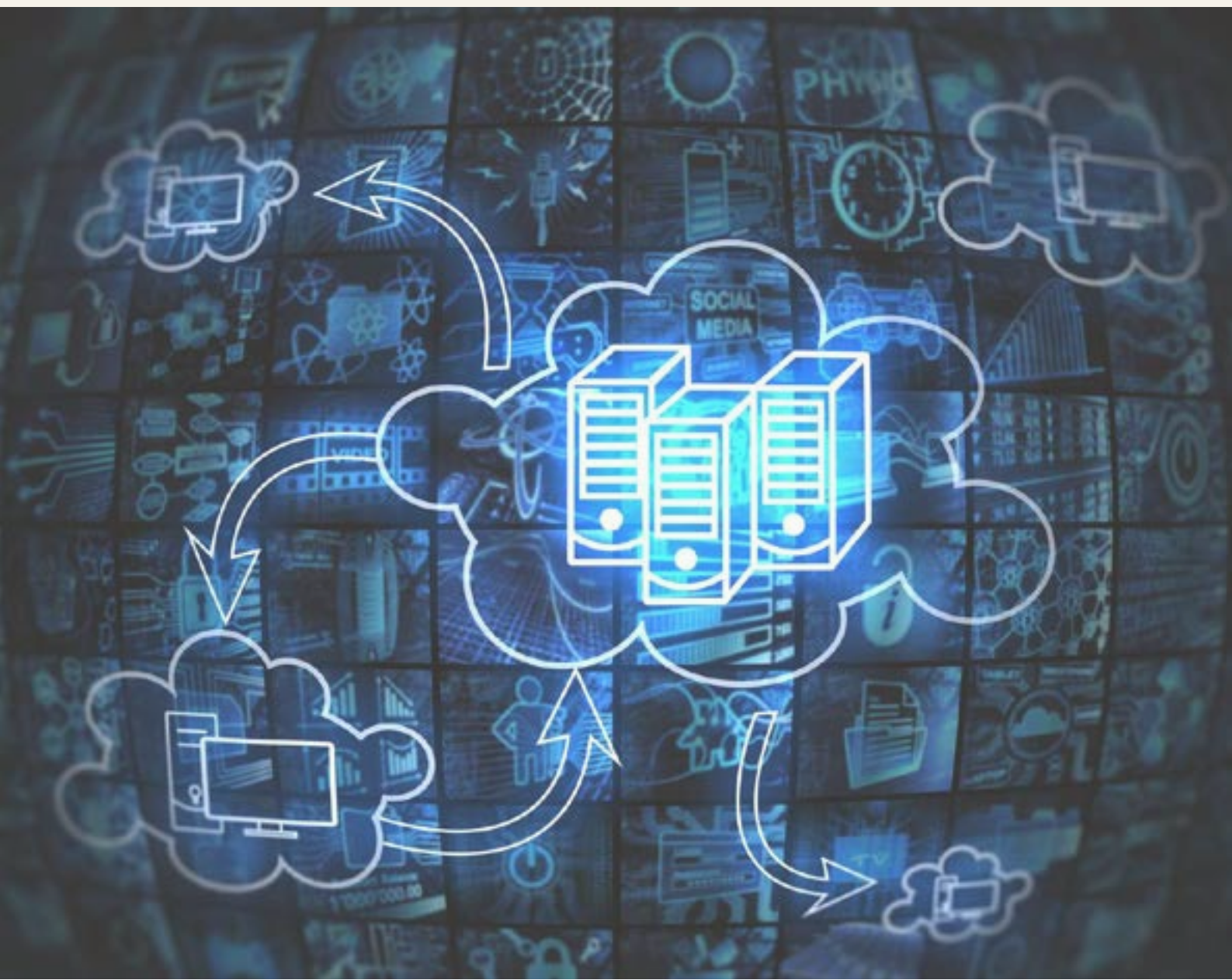


# SSIS Interview Questions and Answers PDF



You are welcome to download and read the PDF for your personal use, but please respect our intellectual property rights and do not share or publish the content elsewhere without our permission. Thank you for your understanding.



Struggling with your SSIS projects or SQL assignments? Our team of experienced professionals provides reliable **SQL assignment help** services that can help you excel in your SSIS endeavors. Visit service link to learn more and get started today."



# Introduction

We've compiled a list of the top 12 interview questions that are commonly asked in SSIS interviews, along with detailed answers and explanations to help you understand the concepts and techniques behind them. Whether you're a beginner or an experienced SSIS developer, our guide will provide you with valuable insights and strategies to help you land your dream job.



# Question 1: What is SSIS and what are its components?

**Answer:** SSIS (SQL Server Integration Services) is a platform for building high-performance data integration and transformation solutions. Its components include Control Flow, Data Flow, Connection Managers, Event Handlers, and Variables.





## Question 2: How do you deploy an SSIS package?

**Answer:** To deploy an SSIS package, you can use SQL Server Data Tools (SSDT) or the Integration Services Deployment Wizard. SSDT allows you to deploy the package directly to an SSIS server.



## Question 3: What is a Connection Manager in SSIS?

**Answer:** A Connection Manager is a component in SSIS that provides the information necessary to connect to a data source. It includes information such as the server name, database name, and authentication type.





## Question 4: What is a Data Flow in SSIS?

**Answer:** A Data Flow is a component in SSIS that allows you to extract data from a source, transform it, and load it into a destination. It includes components such as Source, Destination, and Transformations.





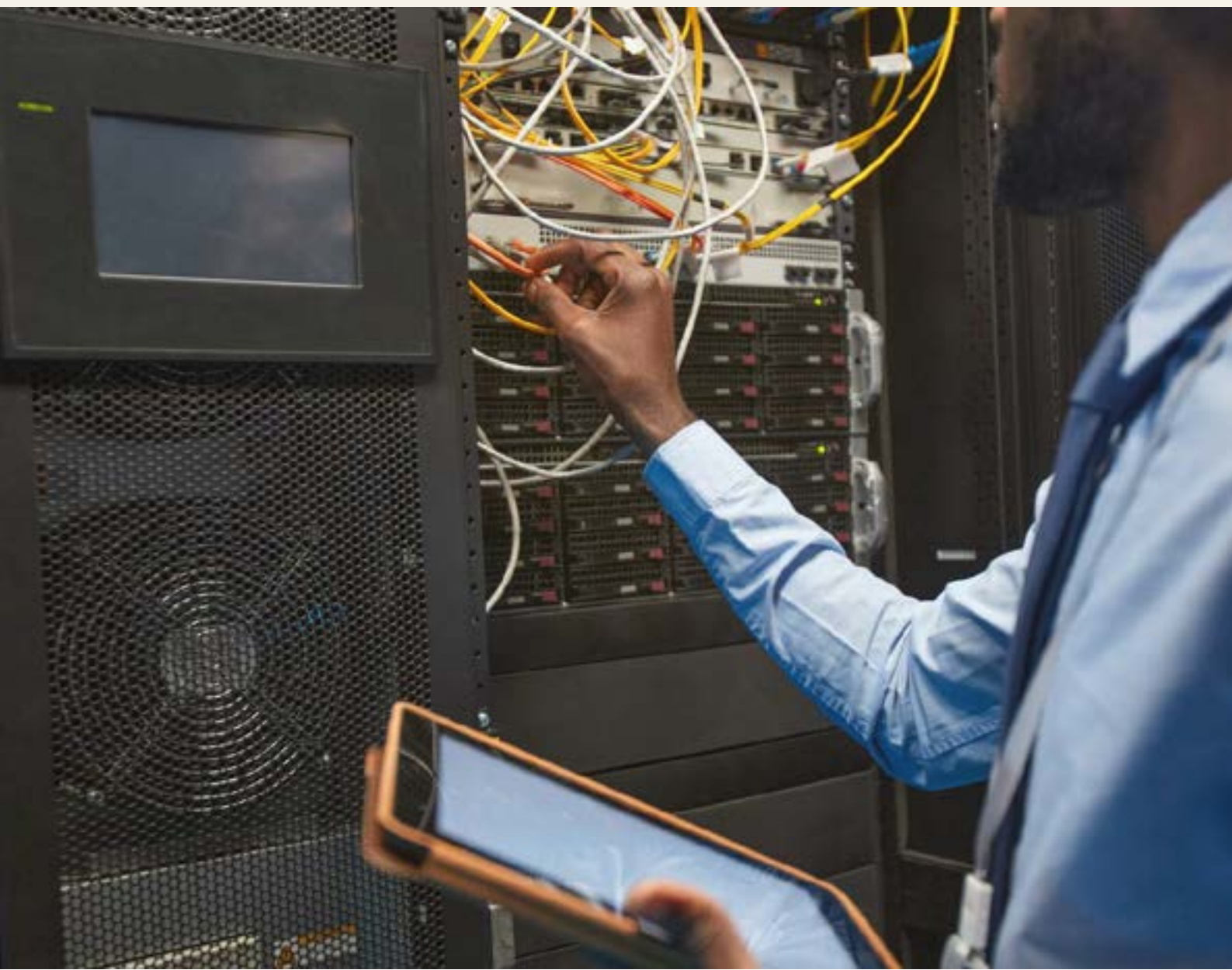
## Question 5: What is a Lookup Transformation in SSIS?

**Answer:** A Lookup Transformation is a Data Flow component in SSIS that allows you to look up values from a reference dataset based on a common key.



## Question 6: What is a Package Configuration in SSIS?

**Answer:** A Package Configuration is a way to configure an SSIS package without modifying its code. It allows you to specify values for package properties, such as connection strings and variable values, at runtime.





## Question 7: What is a Data Source View in SSIS?

**Answer:** A Data Source View is a logical representation of a data source that is used in SSIS. It allows you to define relationships between tables, specify column aliases, and create calculated columns.



## Question 8: What is a Slowly Changing Dimension (SCD) in SSIS?

**Answer:** A Slowly Changing Dimension (SCD) is a dimension in a data warehouse that contains data that changes slowly over time.





## Question 9: What is a Checkpoint in SSIS?

**Answer:** A Checkpoint is a mechanism in SSIS that allows a package to restart from a specific point in case of a failure. It saves the package state to a file or database, which can be used to resume the package execution from that point.



## Question 10: What is a Script Task in SSIS?

**Answer:** A Script Task is a component in SSIS that allows you to execute custom code written in languages such as C# or VB.NET.





## Question 11: What is the difference between a Full Load and an Incremental Load in SSIS?

**Answer:** A Full Load is a type of data load in SSIS that loads all the data from a source into a destination. An Incremental Load, on the other hand, loads only the data that has changed since the last load.



## Question 12: What is a Package Deployment Model in SSIS?

**Answer:** A Package Deployment Model is a way of deploying SSIS packages that allows you to deploy individual packages rather than an entire project.

